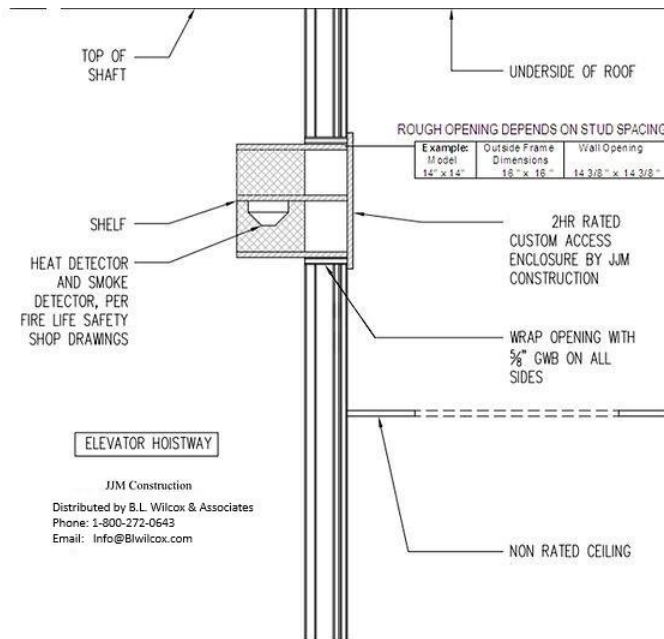


JJM Construction Fire Rated Access Enclosure

For Elevator Hoistway Smoke / Heat Detector(s)*

*Specify: JJM Enclosure when requesting information or pricing.

Phone: 1-800-272-0643 Email: Info@BLwilcox.com



JJM Fire Rated Access Enclosures for smoke detector installation in elevator hoistways provides an approved method that allows for secure smoke detector installation in restricted areas such as elevator hoistways and machine rooms while being serviceable from outside.

Fire Rated Access Doors for Walls and Ceilings manufactured by industry leading companies including: J.L. Industries®, Babcock Davis®, Karp® and Elmdor®. Standard units carry the Underwriters Laboratories 1-1/2 hour "B" label rating for wall applications and the Warnock Hersey Label for 3-hour noncombustible, 2-hour fire barriers for vertical surfaces.

JJM Enclosures proprietary design attaches an acceptable full safeguard assembly with 16-gauge expanded metal lath for tamper resistance. Adjustable shelf for smoke detector / heat sensor mounting within enclosure.

Other Options for standard wall/ceiling fire rated applications include but are not limited to: Stainless Steel finish, drywall/plaster flange(s), Mortis key and other locking options, special finishes. Nonstandard options require additional lead time, inquire for detail.

Custom Applications are available upon request. Products include: Exterior grade access panels, roof access solutions and fire rated floor access solutions. Inquire for details.

Sizing and Availability: JJM enclosures are custom built, limited quantities of the most common sizes are typically available as a stock item. For standard fire rated wall/ceiling enclosures lead time is 7-14 days. For non-standard items lead times will be provided at time of quote.

JJM Fire Rated Access Enclosures by Size Most Commonly Ordered	
10in'	10in' x 11in'
12in'	12in' x 11in'
14in'	14in' x 11in'
16in'	16in' x 11in'
18in'	18in' x 11in'
24in'	24in' x 11in'
Special Sizes Will Be Quoted	