

**NORTH**

# SAF-T-CLIMB® FALL PREVENTION SYSTEM

## INSTALLATION INSTRUCTIONS

### STEP NO. 1

#### ON-THE-GROUND PRE-INSTALLATION

- A. Lay out all equipment.
- B. Carrier rail is supplied in two types— one-piece rail and two-piece rail. If your carrier rail is the two-piece variety, check the cap screws that secure the guide channel to the back of the carrier rail as they can loosen during transit. **TIGHTEN CAP SCREWS IF NECESSARY.** If the climb ends at a platform where the climber will dismount, the Saf-T-Pivot Dismount Section\* should be installed last. See Step No. 4 for special instructions.

\*Saf-T-Pivot Dismount section is a piece of rail with the guide channel removed at one end.

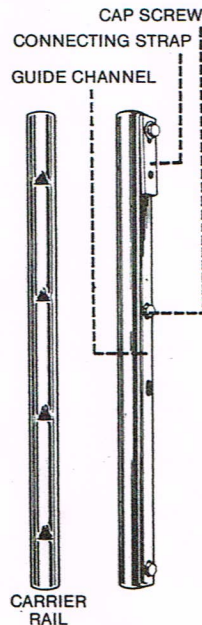
- C. **IN ORDER TO DETERMINE THE CORRECT SEQUENCE FOR THE INSTALLATION OF THE RAIL, CONSULT THE PLANS SUPPLIED WITH THE JOB.** If no engineering plans have been supplied, start installation by attaching the shortest section at the bottom of the ladder. The carrier rail must be installed with the sloping part of the notch **POINTED UPWARD.** The Saf-T-Lock Sleeve will **NOT** lock to prevent falling if the rail is not installed properly.

- D. **PRE-DETERMINE SPACING OF LADDER RUNG CLAMPS.** (NOTE: if special brackets are to be used instead of ladder rung clamps, follow the special instructions supplied with the appropriate brackets.) The first section of carrier rail will start approximately two feet above the ground or mounting platform. The first ladder rung clamp should be positioned as near the bottom rung of the ladder as possible, then follow with another ladder rung clamp at 6' intervals. Where the 6' interval occurs at the union of two sections, the ladder rung clamp should be placed on the first rung above or below the union. If a short section is used, a ladder rung clamp must also be placed at the top of the short section.

- E. With one-piece rail, place 3/8" stud bolts in each position you have selected for a ladder rung clamp. (Any 4/2" stud bolts will be used to install curved rail as described in Step No. 5.) **POSITION ALL STUD BOLTS WHILE CARRIER RAIL IS ON THE GROUND.**

With two-piece rail, remove any cap screws which will interfere with placement of the stud bolts and proceed as above.

- F. **LOOSEN THE CAP SCREW HOLDING THE 4" STEEL CONNECTING STRAP AT THE TOP OF EACH SECTION OF CARRIER RAIL.** Insert a 4" **INTERNAL ALIGNMENT GUIDE** into the top of each section of carrier rail, swing the connecting strap into position, and tighten the cap screw again. This cap screw must extend **THROUGH** the hole in the bottom of the internal alignment guide.



### STEP NO. 2

#### INSTALLING THE FIRST SECTION OF CARRIER RAIL

- A. **LOCATE THE CENTER OF EACH RUNG OF THE LADDER WHERE A LADDER RUNG CLAMP WILL BE ATTACHED.** The carrier rail must be installed in the exact center of the ladder in a straight line up the ladder.

**THE SLOPING PART OF THE NOTCH MUST POINT UPWARD!**

(See Step No. 5 for special concave and convex installations.)

- B. **USING A BLOCK AND TACKLE OR HAND PULLEY, RAISE THE FIRST SECTION OF CARRIER RAIL. RAISE ONLY ONE SECTION AT A TIME.** The internal alignment guide can be damaged if two sections are raised while connected.
- C. **PLACE THE BOTTOM OF THE FIRST SECTION APPROXIMATELY TWO FEET ABOVE THE GROUND (or mounting platform).**
- D. **PLACE A SERRATED LADDER RUNG CLAMP BEHIND THE LADDER RUNG AND OVER THE TWO STUDS** that were placed in the carrier rail. Hold the ladder rung clamp parallel to the carrier rail while you hand tighten a hex nut over a flat washer evenly on each stud. Finish tightening the hex nuts evenly so that the ladder rung clamp remains parallel to the carrier rail as it is drawn up securely against the rung. Finish by tightening a hex nut against the hex nut. **APPLY THE REMAINING LADDER RUNG CLAMPS ON EACH SECTION IN THE SAME MANNER.**



**NOTE: AFTER FIRST SECTION OF CARRIER RAIL IS PROPERLY INSTALLED, THE INSTALLER MAY BUCKLE ON HIS SAFETY BELT, ATTACH HIMSELF TO A SAF-T-LOK SLEEVE, AND CLIMB UP TO INSTALL THE NEXT SECTION. BUT HE MUST EXERCISE EXTREME CAUTION TO SEE THAT HIS SAF-T-LOK SLEEVE DOES NOT RIDE UP OVER THE UNFINISHED END OF THE FIRST SECTION!**

B.L. Wilcox & Associates  
P.O. Box 829  
Whittier, CA 90608-0829  
562-693-2787 Fax 693-5843

# STEP NO. 3

## INSTALLING ADDITIONAL SECTIONS OF CARRIER RAIL

**A. BEFORE TIGHTENING CLAMP ON TOP OF INSTALLED SECTION, RAISE NEXT SECTION ABOVE THE PREVIOUS AND SLIP IT DOWN OVER THE INTERNAL ALIGNMENT GUIDE.** In order to do this it is necessary to remove the bottom cap screw of the next section in order to allow the carrier rail to seat over the alignment guide. Secure the new section to the 4" connecting strap on the prior section with the previously removed cap screw. The cap screw must extend through the hole in the top of the internal alignment guide. Tighten the cap screw so that the connecting strap is firmly against the guide channel, and forms a smooth union for the **SAF-T-LOK SLEEVE** to pass over.



**B. ADD THE LADDER RUNG CLAMPS TO THIS SECTION. NOTE: REPEAT STEP 3 FOR ADDITIONAL SECTIONS TO THE TOP OF THE LADDER.**

# STEP NO. 4

## COMPLETING THE TOP OF THE INSTALLATION

**A.** You will complete the top of the installation with the Saf-T-Pivot Dismount Section. Saf-T-Pivot is normally supplied in 8' lengths or longer and should be positioned to extend 4'6" above the landing level or 2' above a railing.

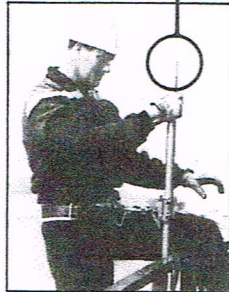
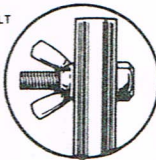
Slip the Saf-T-Pivot Section down over the internal alignment guide and secure connecting strap in place. Attach the lower portion to the ladder with a rung clamp to each of the two top rungs of the ladder, or one clamp over two rungs as near the top as possible. **NEVER** install the Dismount Section without these last two rung clamps in place.

**B.** A Stop Bolt has been provided with the hardware for installation at the top of the Dismount Section to prevent the Saf-T-Lok Sleeve from coming off at the top. The bolt and wing nut can be quickly removed to allow the sleeve to be taken off at the top when required.

**C.** The Saf-T-Pivot Dismount Section allows the climber to rotate around the carrier rail, and land safely before unsnapping the Saf-T-Lok Sleeve from his safety belt.

**NOTE: SAF-T-PIVOT DISMOUNT SECTION SHOULD NOT BE PERMITTED TO EXTEND OVER 4'6" ABOVE THE LANDING. ANYTHING IN EXCESS OF THAT HEIGHT SHOULD BE CUT OFF.**

3/4" x 2"  
STOP BOLT



# STEP NO. 5

## SPECIAL INSTRUCTIONS

Some ladders extend upwards for a distance at an angle, then continue vertically. When installing carrier rail on this kind of an application, you must pull the carrier rail in at the point of angle by hand and secure it with a ladder rung clamp. This will form a smooth curve that the **SAF-T-LOK SLEEVE** can operate over.

In order to assure smooth and safe operation of the Saf-T-Lok Sleeve on the rail, you must leave 3' of straight rail above the bend and before the next joint.

The longer 4 1/2" studs are to be used when installing curved sections of rail. **EXTENSIVE CURVING OF THE RAIL IN THE FIELD AT THE TIME OF INSTALLATION IS NOT RECOMMENDED.** We will curve it at the factory prior to shipment if provided with the proper drawings.

# STEP NO. 6

## CLIMBING WITH THE SAF-T-CLIMB SYSTEM

Once the carrier is installed, no changes or adjustments to any part of the equipment should be necessary. Buckle safety belt **TIGHTLY** around the waist. Slide **SAF-T-LOK SLEEVE** onto rail in UP position. Attach the snap of the **SAF-T-LOK SLEEVE** to the center "D" ring of the belt. Climb normally, leaning back into the safety belt going up and down. Do not allow the locking pawl to draw on the carrier rail.



**DO NOT ATTEMPT TO SIMULATE A FALL FOR TRAINING PURPOSES.** It is difficult and dangerous and should only be attempted by a stunt man. A movie is available for training.

**SAF-T-CLIMB** can help you meet the requirements for ladder safety devices per the Occupational Safety & Health Act.

### WARRANTY

North Specialty Products warrants its Saf-T-Climb® fall prevention system to be free from defects in materials and workmanship. North's only obligation under this warranty shall be, at its sole option, to repair, replace or refund the purchase price of any components found by North to be defective. The buyer assumes responsibility for proper installation, maintenance, and operation of the system, for compatibility and reliability of any components not manufactured or supplied by North, and for all other risks, if any. This warranty is in lieu of the implied warranties of merchantability and fitness for particular purpose and all other warranties, express or implied. No deviation is authorized.

North Specialty Products  
A Division of Siebe North, Inc. □

B.L. Wilcox & Associates  
P.O. Box 829  
Whittier, CA 90608-0829  
562-693-2787 Fax 693-5843