

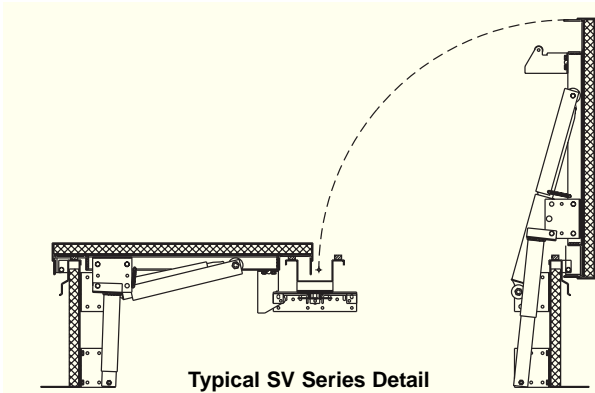
Bristolite's Industrial Skylights

UL Listed and FM Approved Smoke Vents SV Series

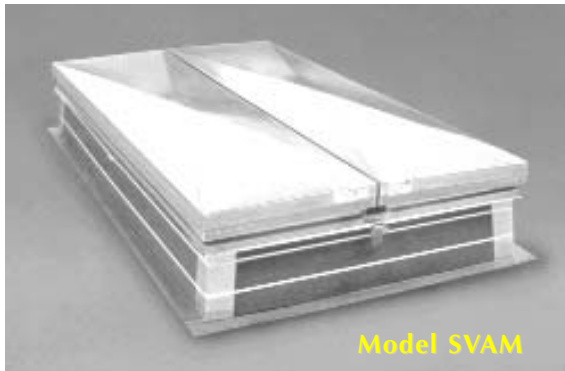
Bristolite's SV series heat and smoke vents are listed by Underwriters Laboratories, Inc. and approved by Factory Mutual Research Corporation. These UL and FM Smoke Vents are available with Aluminum or Steel Bases and Fiberglass, Acrylic or Metal Lids.



Model SVAF



Typical SV Series Detail



Model SVAM

Standard Fusible Link Temperatures

165° 212° 286° 360°

Standard Features

1. Curb-Mount (specify by adding **CM** to model description)
2. Self-Flashing (specify by adding **SF** to model description)

Options

1. Insulated Frame specify by adding **INS** to model description)
2. Insulated Frame and Gutter specify by adding **INSG** to model description)

Specifications: Smoke Vents shall be No. _____ as manufactured by Bristolite Skylights. Metal covers shall be 14 gauge paint bond galvanized steel or 11 gauge aluminum. Metal door shall have 1" UL Listed fiberglass insulation with a .030 aluminum (or optional steel) liner. Skylight domed doors shall be acrylic with CC-2 fire rating or fiberglass with CC-1 rating as manufactured by Bristolite. Curb frames shall be 14 gauge paint bonded galvanized steel or optional 11 gauge aluminum and shall be 13" high (12 inches to door hinge point) with a 4" pre-drilled fastening flange. Curb shall have an integral fully corner welded cap flashing. Exterior insulation (when specified) shall be 1" rigid fiberboard. Double leaf doors shall be actuated by single UL Listed and FM approved fusible link and shall open and lock in a 90 degree open position. Door shall open against a 10 psf uniform load and shall withstand a uniform 10 psf load in the open and locked position. Doors shall be spring-actuated and equipped with heavy-duty shock absorbers to control speed of operation. Unit shall withstand a 40 psf uniform static load in the closed position, and a 30 psf uplift load. Both inside and outside manual releases that do not effect the fusible link shall also be provided and shall automatically be reset by closing the vent doors. All hardware shall be plated for corrosion resistance. Manufacturer shall provide a five year warranty against defects in materials and workmanship.

Model Description

| | |
|-------------|---|
| SVAM | Aluminum Smoke Vent with Metal Doors |
| SVAF | Aluminum Smoke Vent with Fiberglass Domes |
| SVAA | Aluminum Smoke Vent with Acrylic Domes |
| SVSM | Steel Smoke Vent with Metal Doors |
| SVSF | Steel Smoke Vent with Fiberglass Domes |
| SVSA | Steel Smoke Vent with Acrylic Domes |

Available Sizes

| Model Size | Curb Opening | SVAM | SVAF | SVAA | SVSM | SVSF | SVSA |
|------------|--------------|------|------|------|------|------|------|
| 4848 | 48" x 48" | ● | ● | ● | ● | ● | ● |
| 6060 | 60" x 60" | ● | N/A | ● | ● | N/A | ● |
| 4872 | 48" x 72" | ● | ● | ● | ● | ● | ● |
| 4896 | 48" x 96" | ● | ● | ● | ● | ● | ● |
| 6072 | 60" x 72" | ● | ● | ● | ● | ● | ● |
| 6096 | 60" x 96" | ● | N/A | ● | ● | N/A | ● |



Tested and approved



Listed