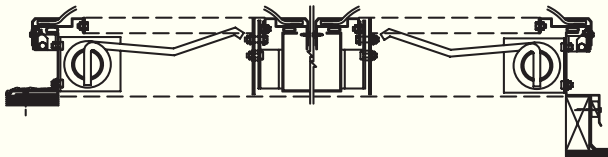
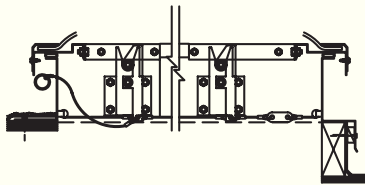


Bristolite's Industrial Skylights

Double Lid Smoke Vent UBC15-7 Tested Model SSVDL

The Double Lid Smoke Vent meets UBC 15-7 and is ICC-ES recognized and listed under ICC-ES ER 5150. The unit provides smoke and heat venting in areas where high live loads are a factor. Smoke vents are available in either curb mount or self-flashing frames.



Model SSVDL-SF-
HS1-OR-MF

Model SSVDL-CM-
HS1-OR-MF

Typical Curb Mount and Self-Flashing Details

Specifications: Smoke Vent shall be model No. T_____ as manufactured by TriStar Skylights, a wholly owned subsidiary of Bristolite Skylights, Santa Ana, Calif. The double doors shall be framed with galvanized steel and shall be glazed with a plastic dome using Tri-Tuff UL 972 listed material. The curb and cross-stiffeners shall also be made of galvanized steel. Corners shall be welded to insure weathertightness. The double lid domes are compression loaded by torsion springs, secured on the opposite side with UL/FM listed fusible link actuated latches and equipped with a shock absorber to control the speed of operation. They can also be opened by the manual exterior handle. The door will open against a 10-PSF uniform load. In the closed position the units will withstand a minimum 40 psf uniform static positive and negative load. The unit meets the requirements of UBC Standard 15-7.

Standard Features Include:

1. **Meets UBC 15-7**- The Steel Smoke Vent will open against 10 psf live load.
2. **CC-1 Burn Rate** - The Tri-Tuff Smoke Vent Domes have a superior CC-1 burn rate classification.
5. **Cost Effective** - The Tri-Tuff Steel Smoke Vent meets National Codes at an affordable price.
6. **Standard Manual Release** - The Tri-Tuff Smoke Vent complies with fire Codes and allows Firemen to evacuate smoke manually at their discretion.
7. **Curb-Mounted** (specify by adding **CM** to model description) or **Self-Flashing** (specify by adding **SF** to model description.)

Options

1. **Insulated Self-Flashing Base of 9" and 12"** (specify by adding **9"** or **12"** to the end of the model description)

These models are also available with a louvered base.

Model Description

SSVDL	Steel Frame Double Lid Smoke Vent
CM	Curb Mount Frame
SF	Self Flashing Frame
HS1	White High Strength Tri-Tuff Glazing
OR	Exterior Manual Outside Release
MF	Mill Finish

Available Sizes

Model Number	Inside Curb Opening
T4848-SSVDL	48" x 48"
T4896-SSVDL	48" x 96"

