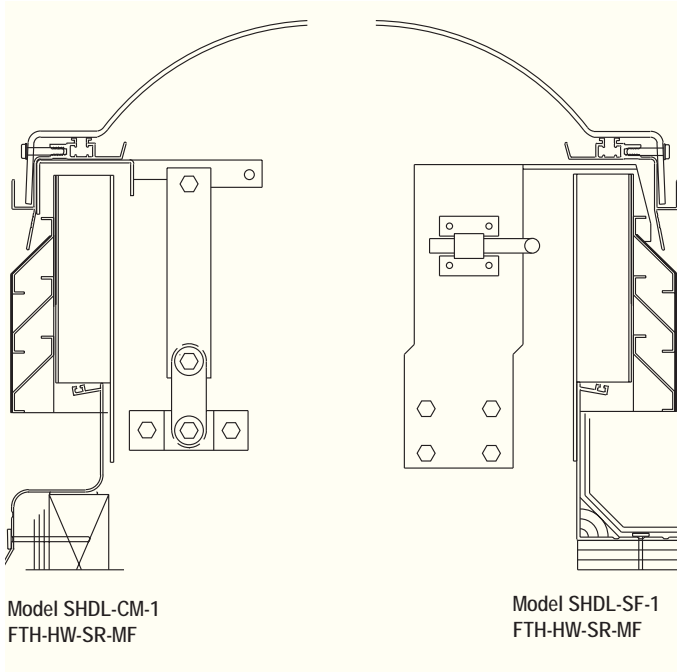


Bristolite's Industrial Skylights

Fiberglass Aluminum Louvered Smoke Hatch Dome Model SHDL

The Fiberglass Aluminum Framed Smoke Hatch Ventilator Domes are skylights with maximum ventilating capacity consistent with moisture resistant design and low profile appearance providing natural lighting and ventilation as well as emergency automatic heat and smoke venting.



Typical Curb Mount and Self-Flashing Details

Specifications: Louvered Smoke Hatch Domes shall be No. ___ as manufactured by Bristolite Skylights, Santa Ana, Calif. The fiberglass dome shall be a molded one piece unit with integral counterflashing skirt to eliminate any dependence on gaskets, sealants or flow-through designs. The Fiberglass dome shall consist of neopentyl glycol isothalic gelcoat laminate with an acrylic modified polyester based resin and silene glass fiber. The dome is attached to an operable frame fabricated of aluminum. The operable frame is attached to the base frame with a hinge. The operable frame is compression loaded by torsion bars and secured on the opposite side by a latch system operated with a UL Listed and FM approved fusible link. The operable frame comes attached to a louvered frame. The louvers will be fixed storm resistant louver blades of 6063-T5 aluminum and shall be continuous. The louvered frame is attached to a base frame of 6063-T5 aluminum with a 2-3/4" roof flange and shall be installed either on a 1-1/2" wide curb furnished by others or on its own 4" high self-flashing curb fabricated from aluminum with a 2-3/4" roof flange. Materials are to be self-extinguishing Approved Plastic Rated CC-1. All materials are to be guaranteed against defective workmanship and materials.

Standard Features Include:

1. ***Fall Protection** - Has been tested to current OSHA regulations for Fall Protection Systems Criteria and Practices (1926.502)
2. **Leakproof** - 10 Year Leakproof Warranty.
3. **High Wind Resistance** - Can withstand high wind conditions.
4. **Curb-Mounted** (specify by adding **CM** to model description) or **Self-Flashing** (specify by adding **SF** to model description)
5. **SR** Single Storm Resistant Louvers
6. **Fusible link temperatures:** 165°, 212°, 286°, or 360°

Options

1. **Dust Filters** (specify by adding **DF** to model description.)
2. **Insect Screens** (specify by adding **IS** to model description)
3. **Bird Screens** (specify by adding **BS** to model description)
4. **Rain Guard** (specify by adding **RG** to model description)
5. **Exterior Manual Release** (specify by adding **M1** to model description)
6. **Double Storm Resistant Louvers** (specify by adding **SR2** to model description)
7. **Security Grills** (for specific information see our product information for Security Grills)

*Fall Protection Testing has been performed on 4x8 domes.

Model Description

SHDL	Aluminum Smoke Hatch Dome Louvered
CM	Curb Mount Frame
SF	4" Self-Flashing Frame
1	Single Non- Insulated Dome
FTH	Fiberglass Translucent (High)
HW	High Wind Resistant
SR	Storm Resistant Louver Blade
MF	Mill Finish

Available Sizes

Model Number	Inside Curb Opening	Amount of Free Air Space
4848-SHDL	48" x 48"	6 square feet
4896-SHDL	48" x 96"	9 square feet