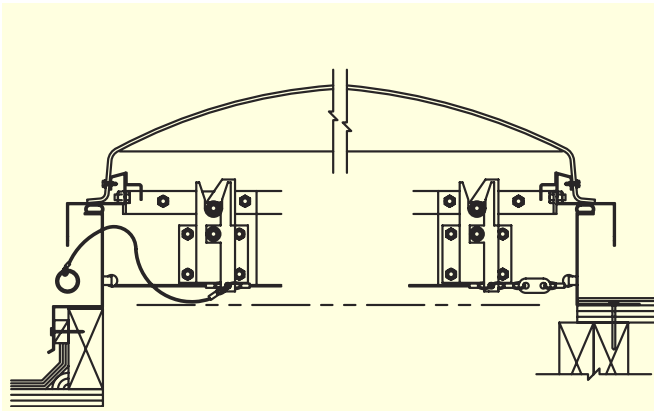


Bristolite's Industrial Skylights

Fiberglass Steel Smoke Hatch Dome Model SSHD

Bristolite's steel Smoke Hatch Domes, manufactured with a cost saving galvanized steel material, provide for the additional requirement of emergency automatic heat and smoke venting. They incorporate all the necessary features to insure safe and reliable operation at a minimum cost.



**Model SSHD-CM-1-
FTH-IR-HW-M1-MF**

**Model SSHD-SF-1-
FTH-IR-HW-M1-MF**

Typical Self-Flashing and Curb Mount Details

Specifications: Smoke Hatch Domes shall be No.H_____ as manufactured by Bristolite Skylights, Santa Ana, Calif. The fiberglass dome shall be a molded one-piece unit with integral counterflashing skirt to eliminate any dependence on gaskets, sealants or flow-through designs. The Fiberglass shall consist of neopentyl glycol isothalic gelcoat laminate with an acrylic modified polyester based resin and silene glass fiber. The dome is attached to an operable frame. The operable frame is attached to the base frame with a hinge. The operable frame is compression loaded by torsion springs and secured on the opposite side by a latch system operated with a UL Listed and FM approved fusible link. The base frame is fabricated of 20 gauge galvanized steel and shall be installed either on a 1-1/2" wide curb furnished by others or on its own 4" self-flashing curb fabricated from 20 gauge galvanized steel with a 2-3/4" roof flange. Materials are to be self-extinguishing Approved Plastic Rated CC-1. All units are guaranteed against defective workmanship and materials.

Standard Features Include:

1. High Wind Resistance - Can withstand high wind conditions
2. Curb-Mounted (specify by adding **CM** to model description) or Self-Flashing (specify by adding **SF** to model description)
3. Exterior Manual Outside Release (specify by adding **M1** to model description) or Interior Manual Release (specify by adding **M2** to model description)
4. Fusible link temperatures: 165°, 212°, 286°, or 360°

Options:

1. Exterior-Interior Manual Release (specify by adding **M3** to model description)
4. Self Flashing Bases of 9" or 12" (specify by adding **9** or **12** to the end of the model description)
5. Insulated Self-Flashing Base (specify by adding **INS** to model description)
6. Security Grills (for specific information see our product information for Security Grills)

Model Description

SSHD	Galvanized Steel Smoke Hatch Dome
CM	Curb Mount Frame
SF	Self-Flashing Frame
1	Single Non-Insulated Dome
FTH	Fiberglass Translucent High
IR	Impact Resistant
HW	High Wind Resistant
M1	Exterior Manual Outside Release

Available Sizes

Model Number	Inside Curb Opening
H4896-SSHD	48" x 96"