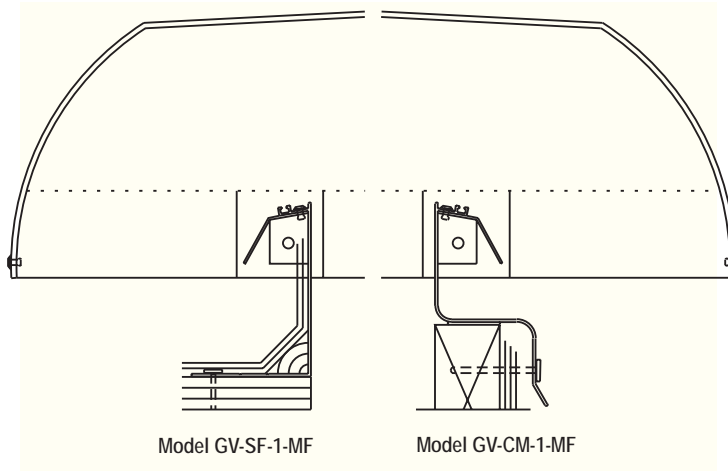
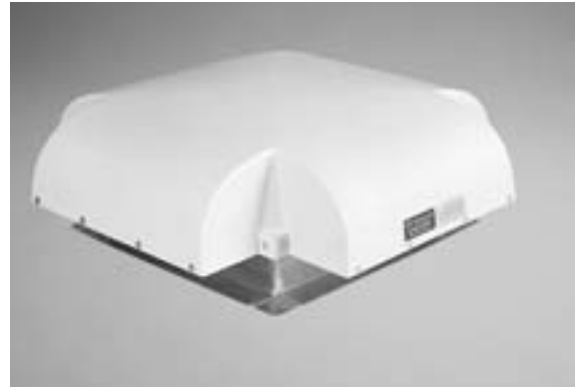


Bristolite's Industrial Skylights

Gravity Skyvent Model GV

Bristolite's Gravity Skyvents are of highest quality and are designed for easy installation. All of the units offer 100% efficient ventilating capacity for their given throat dimensions. Each unit is available as either opaque (black) or translucent (as shown on this page).



Typical Self-Flashing and Curb Mount Details

Specifications: Gravity Skyvents shall be No. _____ as manufactured by Bristolite Skylights, Santa Ana, Calif. The opaque or translucent fiberglass ventilator hood comes attached to a curb mount base fabricated of 6063-T5 aluminum and shall be installed on a 1-1/2" wide curb furnished by others or on its own self-flashing curb fabricated from 5052-H32 aluminum with a nailing roof flange. Bird screen is included. All units are guaranteed against defective workmanship and material.

Standard Features Include:

1. **Curb-Mounted** (specify by adding **CM** to model description)
2. **Self-Flashing:** (specify by adding **SF** to model description)
3. **Bird Screen** (does not need to be specified it is built in with the Gravity Vent)
4. **Translucent Ventilator Hood** (specify by adding **ETH** to model description)
5. **Opaque Ventilator Hood** (specify by adding **FBK** to model description)

Model Description

GV	Gravity Skyvent
CM	Curb Mount
SF	Self-Flashing Frame
1	Single Non-Insulated Hood
MF	Mill Finish

Available Sizes

Model Number GV	Inside Curb Opening	Amount of Free Air Space	Minimum Curb Height
1212	12" x 12"	1.0 sq.ft.	5"
1414	14 1/4" x 14 1/4"	1.5 sq.ft.	5"
1818	18" x 18"	2.0 sq.ft.	6"
2222	22 1/4" x 22 1/4"	3.0 sq.ft.	7"
2424	24" x 24"	4.0 sq.ft.	8"
3030	30 1/4" x 30 1/4"	6.0 sq.ft.	9"
4242	42" x 42"	12.0 sq.ft.	12"
4848	48" x 48"	16.0 sq.ft.	13 ^{1/2} "