

Bristolite's Residential Skylights

Electrolite II™ Electric Sliding Skylight Model EL

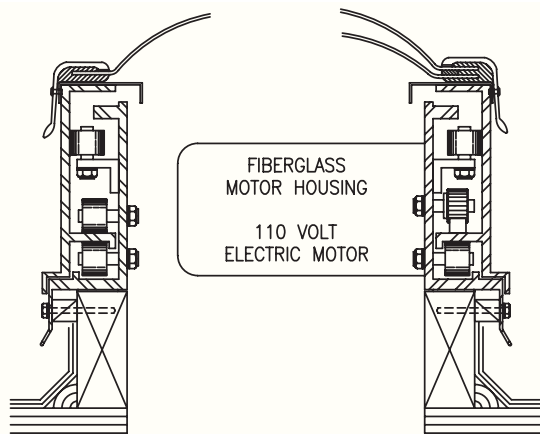
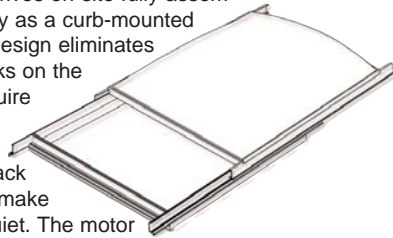
Electric Sliding Skylights

One of the most popular skylights is an exclusive slide-opening design that opens a section of the ceiling to the sky at the touch of a button.

Slides Completely Open

Our Electrolite II™ is unlike venting skylights and roof windows that simply open out from one side. It slides completely open to permit an unobstructed view of the sky from the room below.

The Electrolite II™ arrives on-site fully assembled and installs as easily as a curb-mounted skylight. The cantilever design eliminates the need for clumsy tracks on the roof which after time require maintenance. A 110 volt electric gearhead motor and precisely matched rack and pinion drive system make operation smooth and quiet. The motor and electronics are enclosed in a fiberglass casing for reliability. Bristolite uses specially designed Class-A hardened aerospace tooling to manufacture the Electrolite, insuring long lasting quality and performance.



Typical Curb Mount Detail



Specifications: Electrolite sliding skylight shall be Model No. _____ as manufactured by Bristolite Skylights, Santa Ana, Calif. The acrylic dome shall be fused to its own counterflashing fiberglass skirt using the Therm-o-weld® process. The dome shall be attached to the curb-mounted, extruded aluminum frame. The frame shall provide an integral water barrier and evaporative condensate gutter for condensation drainage. All mechanisms, tracks, motor and slides shall be shielded from the weather. The transport mechanisms shall consist of geared 110 volt ac motor. A three-position switch shall also be provided with the unit. The unit shall be completely leak-proof in design and guaranteed against defects in material and workmanship. The Electrolite should not be opened in freezing conditions. If unit is to be opened up-slope a braking system must be installed. The skylight shall be installed on a 1-1/2" wide curb furnished by others.

Standard Features Include:

1. **Curb Mount** (specify by adding **CM** to model description)
2. **Mill finish** (specify by adding **MF** to model description)
3. **Six Acrylic Color Choices**
 - High White Translucent** (specify by adding **WTH** to model description)
 - Medium White Translucent** (specify by adding **WTM** to model description)
 - Low White Translucent** (Specify by adding **WTL** to model description)
 - Bronze** (specify by adding **BT** to model description)
 - Grey** (specify by adding **GT** to model description)
 - Clear Colorless** (specify by adding **CC** to model description)

Options

1. **Bronze Anodize Frame** (specify by adding **BA** to model description)
2. **Double Dome** (specify by adding **2** to model description)

Available Sizes

Model Number	Curb Openings (inside dimensions)	Model Number	Curb Opening (inside dimensions)
Square		Rectangular	
5555 EL	55" x 55"	4669 EL	46 1/4" x 69 1/2"
7070 EL	70 1/4" x 70 1/4"	4896 EL	48" x 96"
8484 EL	84" x 84"		
9292 EL	92 1/2" x 92 1/2"		