

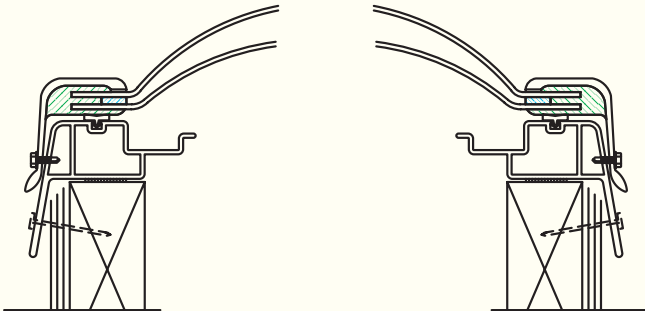
# Bristolite's Residential Skylights

## Thermo-weld® Acrylic Dome PVC Base Curb Mount Skylights Model ASV

**B**ristolite's thermally broken Thermo-weld® seamless fiberglass framed skylight features the energy efficiency of an extruded PVC curb-mounted base for extreme climates. These models are available fixed (as shown) or manually openable.



Fixed Model ASV



ASV-CM-2

Typical Curb Mount Detail

**Specifications:** Skylight shall be model No. \_\_\_\_\_ as manufactured by Bristolite Skylights, Santa Ana, Calif. Skylights shall be fully factory assembled consisting of a cast acrylic double dome with a CC-2 Classification that shall be fused to its own counter-flashing fiberglass skirt through the Thermo-weld process. The unit base shall be extruded PVC to prevent thermal losses through the frame and the formation of condensation on its interior surface. The skylight shall be installed on a 1-1/2" wide curb furnished by others. All units are to be guaranteed against defective workmanship and materials.

(For the openable unit specifications see page two.)

### Standard Features Include:

1. **Curb Mount** (specify by adding **CM** to model description)
2. **Double Dome** (specify by adding **2** to model description.)
3. **Four Acrylic Color Choices**

\***Medium White Translucent** (specify by adding **WTM** to model description)

**Bronze** (specify by adding **BT** to model description)

**Grey** (specify by adding **GT** to model description)

**Clear Colorless** (specify by adding **CC** to model description)

\***Medium White is the only White available for the AS (Thermo-weld Frame) Series.**

### Options

1. **Triple Dome** (specify by adding **3** to model description)
2. **Low profile Dome**-available in WTM, BT or CC **only** (specify by adding **LP** to mode description.)
3. **Pyramid Shaped Dome**-(*selected sizes*) (Specify by adding **P** to model description)

### Model Description

ASV	Fixed Thermo-weld® thermally broken with PVC Base
CM	Curb-Mounted
2	Double Dome (Specify Acrylic Color)

### Available Sizes Fixed Units

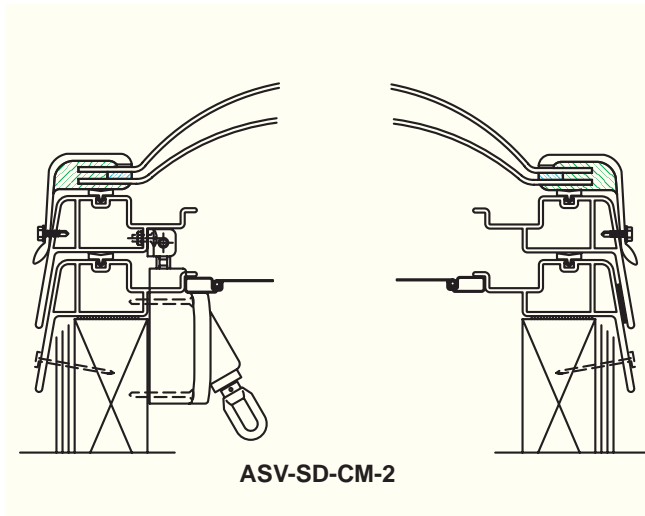
Model Number	Curb Opening Inside Dimension
2222-ASV	22 1/4" x 22 1/4"
2230-ASV	22 1/4" x 30 1/4"
3030-ASV	30 1/4" x 30 1/4"
1446-ASV	14 1/4" x 46 1/4"
2246-ASV	22 1/4" x 46 1/4"
3046-ASV	30 1/4" x 46 1/4"
4646-ASV	46 1/4" x 46 1/2"
2272-ASV	22 1/4" x 72"

The curb-mount models are available for use on any type of roof and are designed especially for a steep pitch roof and roofs covered with tile, wood shakes or similarly thick roofing material.

**Self Flashing is not available in these models.**

# Bristolite's Residential Skylights

## Thermo-weld® Acrylic Dome PVC Base Curb Mount Openable Skylights Model ASV-SD



ASV-SD-CM-2

Typical Curb Mount Detail

**Specifications:** Skylights shall be model No. \_\_\_\_\_ as manufactured by Bristolite Skylights, Santa Ana, Calif. Skylights shall be fully factory assembled consisting on a cast acrylic double dome with a CC-2 Classification that shall be fused to its own counter-flashing fiberglass skirt through the Therm-o-weld process. The operable frame is attached to the base frame with a pivot hinge. The operable frame is lifted by a lifting mechanism with a removable 5' handle. The unit base shall be extruded PVC to prevent thermal losses through the frame and the formation of condensation on its interior surface. All operable units have insect screens and full perimeter gasketing around the PVC mounting base. The skylight shall be installed on a 1-1/2" wide curb furnished by others. All units are to be guaranteed against defective workmanship and materials.

### Standard Features

1. **Curb Mount** (specify by adding **CM** to model description)
2. **Double Dome** (specify by adding **2** to model description.)
3. **Four Acrylic Color Choices**  
 \*Medium White Translucent (specify by adding **WTM** to model description)  
 Bronze (specify by adding **BT** to model description)  
 Grey (specify by adding **GT** to model description)  
 Clear Colorless (specify by adding **CC** to model description)
4. **5' Operating Pole**

\*Medium White is the only White available for the AS (Therm-o-weld Frame) Series.

### Options

1. **Triple Dome** (specify by adding **3** to model description)
2. **32" Extension** for the 5' Operating Pole (specify by adding **H-32** to model description)
3. **Low profile Domes**-available in WTM, BT or CC *only* (specify by adding **LP** to mode description.)
4. **Pyramid Shaped Dome**-(selected sizes) (Specify by adding **P** to model description)

### Model Description

ASV-SD	Openable Therm-o-weld® thermally broken with PVC Base
CM	Curb-Mounted
2	Double Dome (Specify Acrylic Color)

### Available Sizes Openable Units

Model Number	Curb Opening Inside Dimension
2222-ASV-SD	22 1/4" x 22 1/4"
2230-ASV-SD	22 1/4" x 30 1/4"
3030-ASV-SD	30 1/4" x 30 1/4"
1446-ASV-SD	14 1/4" x 46 1/4"
2246-ASV-SD	22 1/4" x 46 1/4"
3046-ASV-SD	30 1/4" x 46 1/4"
4646-ASV-SD	46 1/4" x 46 1/2"
2272-ASV-SD	22 1/4" x 72"

The curb-mount models are available for use on any type of roof and are designed especially for a steep pitch roof and roofs covered with tile, wood shakes or similarly thick roofing material.

**Self Flashing is not available in these models.**